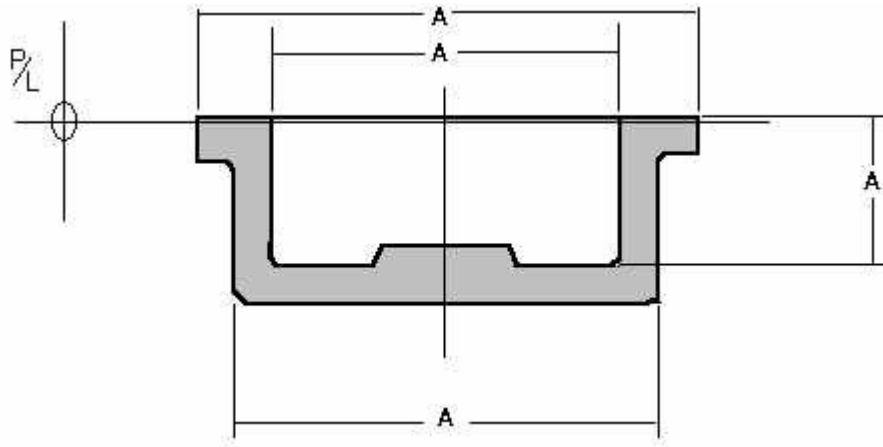


Linear Tolerances



| | Pressure Die Casting | Gravity Die Casting | Sand Casting |
|--|----------------------|---------------------|--------------------------|
| Length of Dimension A | <u>Aluminium</u> | <u>Zinc</u> | <u>Aluminium or Zinc</u> |
| Basic Tolerance up to 25mm | ± 0.075 | ± 0.05 | ± 0.4 |
| Basic Tolerance up to 150mm | - | - | - |
| Additional Tolerance for each further 25mm | ± 0.04 | ± 0.025 | ± 0.075 |

The values shown represent production practice at the most economical level. Greater accuracy involving extra work or care in production should be specified only when and where necessary.